



User's Guide

Linkbox 8000HD Local Satellite & Terrestrial Receiver



LinkTV Media

Sun Valley, California, U.S.A.

CONTENTS

1.	GETTING STARTED	4
1.1	Introduction	4
1.2	Caution.....	4
1.3	What's inside the box	5
2.	Control and Displays	6
3.	Operation.....	8
3.1	Initial Setup	8
3.2	Installation	8
3.2.1	Antenna Connection	8
3.2.2	Satellite List and Antenna Setup	8
3.2.3	Single Satellite Search.....	10
3.2.4	Multi Satellite Search	10
3.2.5	TP List and Search	10
3.2.6	ATSC (Terrestrial) INSTALLATION.....	10
3.3	Edit Channel.....	11
3.3.1	TV Channel List	11
3.3.2	Radio Channel List.....	13
3.3.3	Delete Channel	13
3.4	System Setup.....	13
3.4.1	Language.....	13
3.4.2	TV System	14
3.4.3	Display Settings	14
3.4.4	Local Time Setting	14
3.4.5	Timer Setting.....	15
3.4.6	Parental Lock.....	15
3.4.7	OSD Setting	16
3.4.8	Favorite.....	16
3.4.9	Others	16
3.5	Tools.....	16
3.5.1	Information.....	16
3.5.2	Factory Setting.....	16
3.5.3	Upgrade via RS232 (Receiver to Receiver)	17
3.5.4	Upgrade via USB	17
3.6	Game	18
3.7	HDD(PVR).....	18
3.7.1	Record Manager	18

3.7.2 Storage Information.....	18
3.7.3 PVR Setting	18
3.7.4 Media Player.....	18
3.8 PVR.....	20
3.8.1 Recording	20
3.8.3 Timeshift	21
3.8.4 Jump	21
3.9 Channel List	21
3.10 Program Guide (EPG).....	22
3.11 Audio Change	22
3.12 Favorite Channels	22
3.13 Video Mod	22
3.14 WiFi Function	23
3.14.1 WiFi Manager	23
3.14.2 AP Connect	24
3.14.3 Upgrade by Network.....	24
4. SPECIFICATIONS.....	25
5. TROUBLESHOOTING	27

1. GETTING STARTED

1.1 Introduction

The Linkbox 8000HD allows you to record HD digital satellite programming and enjoy it whenever you choose. You can enjoy the vivid picture and lifelike sound of any of the digital broadcasting channels.

This manual will show you how to setup and operate the Linkbox 8000HD. You will find the operation of the Linkbox 8000HD to be simple and easy to handle. Any problems not addressed in this manual should be handled by qualified personnel.

1.2 Caution

- Do not attempt to open the cover. There is risk of malfunction or electric shock.
- When you are not using the product for extended periods of time, please unplug the unit from the outlet.
- Do not use damaged power cords. There is danger of fire or electric shock if damaged power cords are used.
- Do not install the unit on the following places:
 - in direct sunlight
 - in damp or wet areas
 - in extremely cold or hot areas
 - in very dusty areas
 - in places that have hot fumes or oils
 - in areas of high vibration or movement
 - near open liquids
- Do not cover the product or place heavy items on top of the product
- Keep area around the unit clear for proper ventilation
- Do not connect/disconnect any cables while the power cable is plugged in
- Avoid using sprays or liquid materials around the unit. Caution should be used to ensure foreign objects/materials do not enter the unit.
- A means to disconnect the power cable should be easily accessible.

1.3 What's inside the box












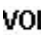
Please confirm that the following items are enclosed in the box when you open it:

- 1- Remote Control
- 2- AAA Batteries
- HDMI Cable

NOTE: If any of the items are missing, please contact the vendor where this product was purchased.

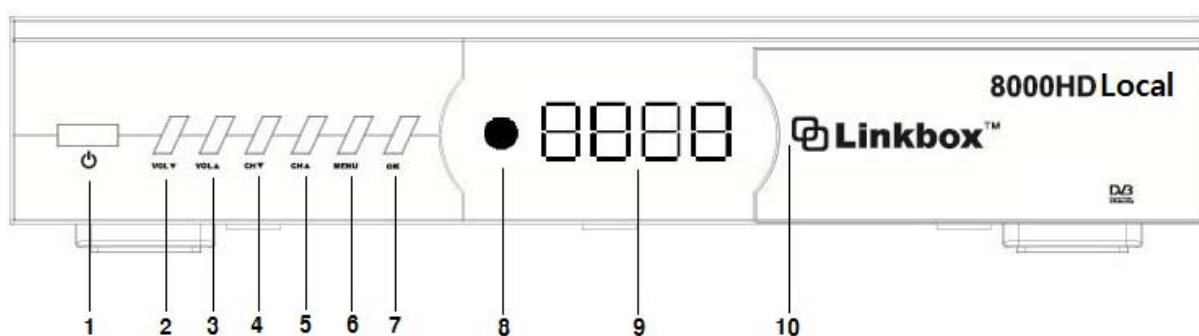
2. Control and Displays

● Remote Control

Key	Function
	Power on/off
	Mute
PAUSE	Holds the picture or releases the pause
	Shows channel information
AUDIO	Selects audio mode, Selects audio language
LAST	Returns to previous channel
MENU	Enter/Exit main menu screen
EXIT	Move to previous menu
PAGE -	Page down
PAGE +	Page up
FIND	Find Channel
EPG	Shows program information
FAV	Enter/Exit favorites menu
SAT	Enter programmed satellite list
SIG	Check signal quality
TIME	Shows current Time , Set time
	Fast rewind playback
	Fast forward playback
	Plays recorded program
	Stop recording or playing
	Slow rewind
	Slow forward
	Pause the playback
	Starts recording
HDD	Enter Hard Disk Recording menu
PVRi	PVR Information
ZOOM	Zoom Screen
SLEEP	Sleep timer
CH +/-	Channel Up /Down
SUBT	Subtitle Function
V.MODE	Show/Modify video out resolution
OK	Shows Channel list. Confirm selection
TV/RADIO	Toggles between TV and Radio operation
F1	Function Key
F2	Function Key
	Change the value of a selected line, Volume up/down

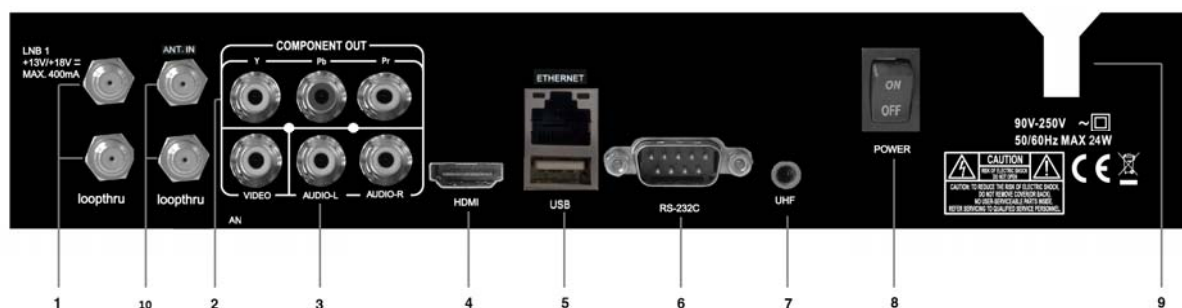


● Front Panel



No	Name	Fuction
1	POWER	Switches the unit between standby and on
2	VOL ▼	Change volume up
3	VOL ▲	Change volume down
4	CH ▼	Change CH down
5	CH ▲	Change CH up
6	MENU	Moves to MENU
7	OK	Select in menus
8	DISPLAY	Segment LED Display
9	IR	IR Receiver
10	USB	USB Port (+5V 500mA)

● Rear Panel



No	Name	Function
1	IF Input / Output	IF INPUT From LNB to receiver / IF Loop-through output to 2 nd receiver
2	Component Output	Component Video Output(Y, Pb, Pr)
3	Composite Output	Composite Video Output/ Audio Left/Right Output.
4	HDMI	Digital Video/ Audio Output
5	USB+RJ45	USB2.0/Ethernet
6	RS232	Serial Port used for software upgrade
7	UHF	Option for UHF Remote Controller kit
8	Rocker Switch	AC Power Switch
10	Terrestrial Input	Terrestrial Input/ Output

3. Operation

3.1 Initial Setup

When the receiver is powered on for the first time, the main menu will appear.

When first powering on the unit, please do the following:

- 1) Select the System Setup
- 2) Switch the language using the ◀ ▶ buttons. Confirm the language by pressing [OK].
- 3) Select installation on the main menu and configure antenna setting (See section 3.2)
- 4) Adjust the LNB configuration for each satellite
- 5) Start scan to find programs
- 6) Exit the installation after all programs are scanned and found



Use the ◀ ▶ ▲ ▼ buttons to navigate the menu and press [OK] on the remote to make the selections.

3.2 Installation

The Installation menu is located on the main menu.

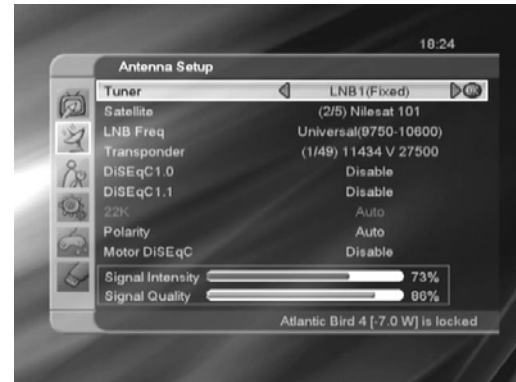
3.2.1 Antenna Connection

Use the ◀ ▶ buttons to set the “Antenna Connection Type”.

3.2.2 Satellite List and Antenna Setup



You can Edit, Add, or Delete entries in the Satellite List



Select Tune LNB1 or LNB2, Satellite, LNB Type, transponder and DiSEqC(1.0 and 1.1).

3.2.2.1 Motor DiSEqC

3.2.2.1.1 DiSEqC 1.2

“Local Longitude”/“Local Latitude” is disabled for DiSEqC 1.2

3.2.2.1.2 Motor Setting

- Select “Motor Setting” in the DiSEqC 1.2 menu
- Press ◀ ▶ buttons to change satellite or transponder
- Go to “Position No. & Save”
 - Press ◀ ▶ buttons or numbers to select or input Position NO.
- “Go to X”
 - Press [OK] to open a list. You can go to X or go to reference.
- Select “Satellite”
 - Highlight “West/Save/East” and press the ◀ ▶ buttons to move the dish.
 - Press [OK] to save the position.
- “Recalculation”
 - Selection this option and press [OK] to recalculate.



3.2.2.1.3 USALS

- Set the satellite's longitude and local longitude / local latitude. USALS can move the dish automatically.
- Local Longitude: Please input the Local Longitude using the numeric keys. Adjust East/West using the ◀ ▶ buttons
- Local Latitude: Please input the Local Latitude using the numeric keys and adjust South/North using the ◀ ▶ buttons
- Motor Setting: Switching the satellite can move the dish to the right place
- Limit Setup: When you set "limit setup" to "West Limit/ East Limit", you can move the dish to the west or east by pressing ◀ ▶ buttons manually. When you are finished moving to the target place, please press [OK] key to save the point.

3.2.3 Single Satellite Search

- Select the satellite to scan
- Scan Option: Scan All Channels or Scan Free Channels
- Scan Channel: Scan TV+Radio Channels, TV Channels, or Radio Channels
- Network Scan: Enable/Disable Network Scan
- Scan Mode: Normal Scan or Blind Scan
- Scan Start: After options are chosen press [OK] to start the search.

3.2.4 Multi Satellite Search

Under "Satellite", press [OK] to view the selected satellite. The system will use the DiSEqC1.0/DiSEqC1.2/USALS function to search for the satellite and scan the channels. The satellites displayed in the bottom box will be scanned.

3.2.5 TP List and Search

Press the ◀ ▶ buttons to switch between the satellites and press [OK] to begin the TP Scan.

3.2.6 ATSC (Terrestrial) Installation

3.2.6.1 Automatic Scan

- Select a specific media by using ◀ ▶ keys between Terrestrial or Cable.
- Select frequency range by using ◀ ▶ keys.
- Press [OK] to start scan procedure in the 'Start Scan'

3.2.6.2 Manual Scan

- Select a specific media by using ◀ ▶ keys between Terrestrial or Cable.
- Select frequency range by using ◀ ▶ keys.
- Press [OK] to start scan procedure in the 'Start Scan'

3.3 Edit Channel

3.3.1 TV Channel List

- Press [OK] key to preview the highlighted program in the right side window.
- Use ◀ ▶ buttons to switch the "Program Group".
- Press [Menu] or [Exit] keys to go back to the "Edit Channel" menu.
- Press the color key to implement the corresponding function in "Channel List".



3.3.1.1 Favorites

- Choose between 8 different favorite groups using the ▲ ▼ buttons.
- Press [OK] to place a favorite marker.
- Press [OK] on a marked favorite group to cancel the existing favorite marker.
- When finished, press [EXIT] to go back to "TV Channel List". A favorite marker should be visible on selected channels.

3.3.1.2 Lock

- Press the red button.
- The default password is "0000". If the password is successfully entered, you will see a lock figure on the right side of the highlighted channel.
- After saving and exiting the menu, the unit will require the password

to watch the locked channel.

3.3.1.3 Skip

- Press the green button.
- This will place a “skip” marker on the right side of the highlighted channel.
- After saving and exiting the menu, the channel will be skipped when navigating through the channels.

3.3.1.4 Move

- Press the yellow button.
- This will place a “move” marker on the right side of the highlighted channel.
- Press the ▲ ▼ buttons to move the channel to the desired position.
- Press [OK] when finished.

3.3.1.5 Edit

- Pressing the blue button will open the Edit menu

3.3.1.5.1 Sort

- Press the red button in the Edit Channel menu.
- Channels may be sorted in the following ways:
 - Name(A-Z): Sort in alphabetical order. “\$” symbol is ignored.
 - Name(Z-a): Sort in descending alphabetical order. “\$” symbol is ignored.
 - FTA: Sort the channel into free and scrambled order. Free channels will be in the front of the channel list while scrambled channels will be found at the end of the channel list.
 - Lock: All locked channels will be placed in the end of the channel list.

3.3.1.5.2 Edit

- Press the green button in the Edit Channel menu.
- Navigate to a channel and press [OK] to open the “Rename” window.

- 1) Press the red button to switch to capital.
- 2) Press the green button to delete the character.
- 3) Press the yellow button to save the modification.
- 4) Press the blue button to cancel the operation.

3.3.1.5.3 Delete

- Press the blue button in the Edit Channel menu.
- Navigate to a channel and press [OK] to mark the channel for deletion.
- After saving and exiting the Edit Channel menu, the marked channel(s) will be deleted.

3.3.2 Radio Channel List

Operation of the Radio Channel List is similar to operation of TV Channel List. Please refer to the “TV Channel List” section.

3.3.3 Delete Channel

3.3.3.1 Deleting a satellite channel

- Use the ◀ ▶ buttons to navigate.
- Press [OK] to delete.

3.3.3.2 Delete All Satellite Channels

- Press [OK] to delete all channels.

3.4 System Setup

Press [OK] or the ▶ button to enter the System Setup Menu from the Main Menu.

Press ▲ ▼ key to select menu items and press ◀ key or [Exit] key to go back to main menu.

3.4.1 Language

- Use the ◀ ▶ buttons to select menu languages
 - Language options include: English, French, German, Russian, Arabic, Portuguese, Turkish, Spanish, Polish, Italian and Persian.
- First Audio: Some channels have more than one audio language option. Use this function to set the default audio language. If a channel offers the language you choose, it will be used by default.
- Second Audio: If the channel does not offer audio in the language

selected in “First Audio”, it will play use the audio selected in “Second Audio” if available.

3.4.2 TV System

- Video Resolution : 576i, 576p, 720p, 1080i
 - Press [OK] to select the Video Resolution (options : 576i, 576p, 720p, 1080i.). After selecting the resolution, it will ask you if you would like to save the setting. If you select “No”, or if you do not confirm in 15 seconds, it will go back to the original resolution.
- Aspect Mode
 - Set the TV aspect mode (4:3 Letter Box, 16:9, Auto, 4:3 Pan & Scan) by using the ◀ ▶ buttons.
- Video Output
 - Use the ◀ ▶ buttons to switch between CVBS and RGB.
- Digital Audio Out
 - Set Digital Audio Out mode (BS out, LPCM Out)

3.4.3 Display Settings

Use the ◀ ▶ buttons to fix Brightness, Contrast and Saturation of Display.

3.4.4 Local Time Setting

- GMT Usage
 - Use the ◀ ▶ buttons to switch between “On” and “Off”
- GMT Offset
 - This option is enabled only when you select “TDT Auto” mode.
 - Use the ◀ ▶ buttons to switch the GMT Offset value. The range is from -12:00 to +12:00 in half hour increments.
- Summer Time
 - This option is enabled only when you select “TDT Auto” mode.
 - When turned on, it will add one hour for Daylight Savings.
- Date and Time
 - These options are enabled only when the GMT Usage option is turned off
 - Use the ◀ ▶ buttons to navigate fields.
 - Use the numeric buttons for input.

- If the current channel provides the correct time information, you will see the current time while you enter the Time menu. If the channel does not provide the time, you will have to input the date and time information manually.
- Press [Exit] to leave the Time menu.

3.4.5 Timer Setting

- Use the ▲▼ buttons to select a timer, then press [Enter] to open the timer menu.
- The current time information will be displayed on the first column. If the current time is incorrect, please modify the time information using the Time item.
- Timer Mode: There are several modes for Timer setting available. These include Off, Once, Daily.
- Recording: Select On/Off to enable or disable recording of the wakeup program.
- Wakeup Channel: Press [OK] to enter the channel list and select the channel you want to play.
- Wakeup Date: Use the number buttons to input the date.
- Wakeup Time: Use the number buttons to input the wakeup time. When the time has occurred, the system will automatically switch to the wakeup channel, regardless of whether the system is in standby mode or in use.
- Duration: Once the wakeup duration has expired, the system will enter standby mode. To disable the duration timer, set the duration to 00:00.
- Select Save and press [OK] to save the timer settings. Select Cancel or press [Exit] to cancel the operation.

3.4.6 Parental Lock

- Select Parental Lock and enter the password. The default password is "0000".
- Use the Menu Lock to enable/disable password entry into Edit Channel/Installation/Tools menus.
- Use the Channel Lock to enable/disable the password requirement for

locked channels.

- To change the password, select New Password. Use the numerical buttons to enter the new password when prompted. The user will be asked to re-enter the new password to confirm. If both entries match, the new password will be saved and you will be taken to the System Setup menu.
- Press [Exit] to leave the Parental Lock menu.

3.4.7 OSD Setting

- You can adjust the OSD timeout and transparency by using the ◀ ▶ buttons.

3.4.8 Favorite

- Press [OK] to rename the favorite group.
 - Press the red button to switch to capital.
 - Press the green button to delete the character.
 - Press the yellow button to save the modification.
 - Press the blue button to cancel the operation.

3.4.9 Others

- LNB Power: If turned On, the receiver will supply power to the satellite antenna. If the setting is Off, the receiver will not supply power to the antenna.
- Channel Play Type: You can choose to play Free, Scrambled, or All channels.
- Press [Exit] to exit the “Other” menu.

3.5 Tools

3.5.1 Information

Show the system information including model name, boot version, main, and dB code.

3.5.2 Factory Setting

Use is option to revert the system to the default factory settings.

- Select “Yes” to continue

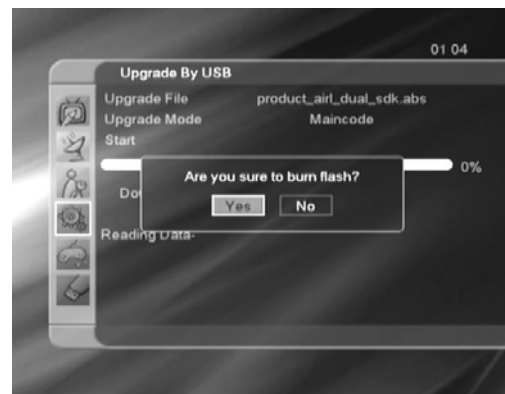
- Enter the 4 digit password when prompted and press [OK]. The default password is “0000”. If you have forgotten your password, contact your dealer for a master factory password.
- If you do not wish to proceed, press [Exit] before password is entered.

3.5.3 Upgrade via RS232 (Receiver to Receiver)

- Connect the master and slave receivers with a Null Modem RS232 Cable (Pins #2 and #3 twisted).
 - Connect the master receiver to the TV and select transfer mode.
 - Power on the slave receiver.
 - Select “Start on the master receiver screen and press [OK] to start the upgrade.
 - When finished, press [Exit] button to save the parameters and exit
- WARNING! Do not disturb the data transfer by pressing any remote control buttons or disconnecting the RS232 cable, IF cable, RCA cable, etc. during the data transfer until the “Please wait for saving” message disappears.

3.5.4 Upgrade via USB

- Download – USB Mode has the following options:
 - Maincode
 - Ch Data
 - All Code
 - All Data + Boot_code
 - Background
 - Bootloader
 - Upload(All Data Backup)



- User needs to put the upgrade file under root in the USB storage device.
- When the user switches to the Download – USB mode, “File” field will show the upgrade file.
- Select the mode and download the file.
- When complete, you can remove the USB device.

3.6 Game





Games such as Tetris, Othello, and Sudoku can be found in the Game menu.

3.7 HDD(PVR)

HDD and PVR setting information can be found in the USB menu.

3.7.1 Record Manager

To play recorded content;

- Press [Play] to preview the content.
- Press [OK] to play the content in full screen.
- Press [Pause] once to pause the content.
- Pressing [Pause] repeatedly will utilize the step function.
- Use the   buttons to rewind or fast forward at x2, x4, x8, x16, x24 speeds
- Use the   buttons to rewind or play at x1/2, x1/4, x1/8 speeds.

3.7.2 Storage Information

- Storage Information of the USB or SATA device will be displayed if connected to the unit.
- Use the Yellow button to format the File System in either NTFS or FAT
- Use the Blue button to set the DVR Type(REC & TMS, Record).

3.7.3 PVR Setting

- Enable/Disable Timeshift, Timeshift to Record, PS Record options.
- Jump: Fixes the time difference of a step move

3.7.4 Media Player

- The Media Playlist will be displayed if the USB device is plugged in.
- Scroll through the playlist to preview pictures (JPG,BMP). A MP3 logo is displayed for MP3 files.
- Pressing [F1] once will allow the Storage Type (Partition and other Device) to be changed.
- Subsequent presses of [F1] will allow the Media PlayerType (Music, Image, and Video) to be changed.

3.7.4.1 Music Player

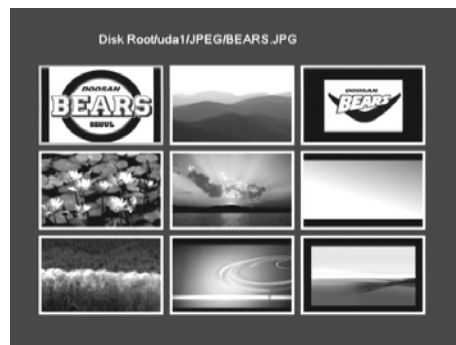
- Use the ▲▼ buttons to navigate to music files and press [OK] to play. The music file information will be displayed in the right window.
- Use the [Red] button to show the playlist you selected.
- Use the [Green] button to select the music file to play.
- Use the [Yellow] button to select all files in the folder.
- Use the [Blue] button to enter Edit Mode
 - EDIT MODE
 - [Red] button: Use to change selected filename or folder name
 - [Green] button: Use to copy selected file or folder into other folders or storage.
 - [Yellow] button: Deletes selected file or folder.
 - [Blue] button: Remake the folder.
- Use the [F1] button to change the Storage type and the Media type.
- Use the [F2] button to sort by Name, Time, Size, or Favorite
- Use the [FAV] button to choose the playback mode (Repeat the folder contents, Shuffle, Repeat a single file)

3.7.4.2 Image Player

- Use the ▲▼ buttons to navigate through image files (JPG,BMP) and display them in the preview window.
Press [OK] to select a file and start the slideshow.



- Use the [Red] button to show the playlist you selected.
- Use the [Green] button To select the file.
- Use the [Yellow] buttons to select all files in the folder.
- Use the [Blue] button to enter Edit Mode
- Use the [FAV] button to set the slideshow time and mode
- Use the [SAT] button to enter the Multi Image View Mode.
- Navigate the files using the ▲▼◀▶ key and press [OK] to select
- Slideshow can be viewed after the files are selected.



3.7.4.3 Video Player

Use the ▲▼ buttons to navigate through video files. A video preview will be displayed in the preview window. Press [OK] to select a file and start playback.

3.8 PVR

3.8.1 Recording

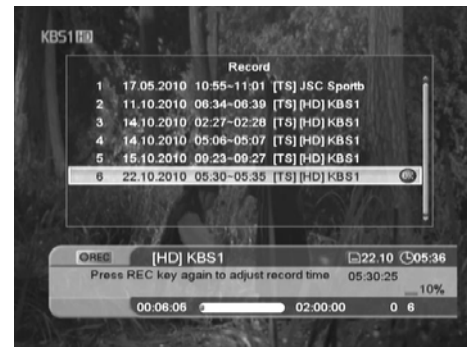
While watching a channel, pressing the [REC] button will start recording for a set duration of 2 hours.

If the [REC] button is pressed for a second time, the user will be given the option to change the record duration. Pressing [STOP] at any time will stop the recording.



3.8.2 Record File List

Use the [PVRi] button during the playback of a recorded file to display the recording file list. Selecting another file will start playback of that file.



3.8.3 Timeshift

Use this option to enable or disable the Timeshift.

Enabling Timeshift will cause the system to store any current channel into a buffer as it plays. This allows the user to [Pause/Play] or rewind the current channel. Forwarding can also be done up until the time where the program is being played live.

3.8.4 Jump

- In the Jump menu, the user can choose between 30sec/1min/5min/10min/30min jump increments.
- During playback of HDD recorded program, pressing [PREV]/[NEXT] buttons will skip backward or forward the increment set by the user.

3.9 Channel List

Press [OK] during playback to open the channel list.

- Navigate the channel list using the ▲▼ PG↑ PG↓ buttons.
- Press [OK] to select a channel to watch.
- Press the [Red] button to set the Parental Lock for the current program.
- Press the [Green] button to change the name of the current program.
- Press the [Yellow] button to display the favorites list.
- Press the [Blue] button to search for a program by name.



3.10 Program Guide (EPG)

Press the [EPG] button to open the program guide. The title and start time of the program will be shown.

- Navigate the channel list using the ▲▼ PG↑ PG↓ buttons.
- Press [OK] to select a channel to watch.
- Press [Exit] to return to full screen.



3.11 Audio Change

While watching a program offering multiple audio languages

- Press [Audio] and use the ▲▼ buttons to switch languages
- To change the audio mode (L-Left, R-Right, L/R-Stereo)
- Press [Audio] and use the ◀▶ buttons to switch modes

3.12 Favorite Channels

- Press the [FAV] button to recall a stored favorite channel.
- Favorite Channels are programmed and stored using the Favorite Edit Menu.

3.13 Video Mode

- Press the [V.MODE] button once to view the Video Mode (Resolution)
- Press the [V.MODE] button again to change the Video Mode (576i/576p/720p/1080i)
- If a resolution is chosen that is not supported by the TV
 - Press the [V.MODE] button after rebooting the STB
 - Change the resolution using front LED display. Resolution will be displayed by the LEDs. (TV screen and menu will not show up without supported resolution setting)

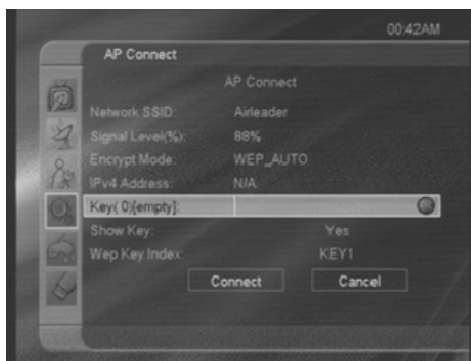
3.14 WiFi Function

3.14.1 WiFi Manager

- Insert WiFi Adapter (Ralink RT5370) to USB port
- Main MENU → Tool → WiFi Manager
- Change WiFi Device On condition by using left/right volume key
- Currently available AP(Access Point) list will be appeared
- Refresh AP list by pressing Red key if needed.



3.14.2 AP Connect



1) AP Connect – OPEN

Press Connect for open AP without security

2) AP Connect –WPA, WPA2,WEP, ATT

Type password/OK for AP with security and press Connect

- If connected successfully, “AP Connected” pop up message will be appeared.



3.14.3 Upgrade By Network

- Select Upgrade Mode.
- Press Start and check the software version. Then select Yes to start download.
- Do not turn the power off until download and rebooting completed.



4. SPECIFICATIONS

Satellite Tuner

Input Connector	F-type,IEC169-24
Frequency Range	950MHz to 2150MHz
Input Level	65 dBm~-25 dBm
LNB Power	14V/19V (400mA Max)
Symbol Rate	1 to 45Msps.(SCPC,MCPC)
DiSEqC	Diseqc 1.2 & USALS Compatible
Band Switch	22KHz tone
Demodulation	QPSK/8PSK/APSK
Viterbi Decoding Rate	1/2,2/3,3/4,5/6,7/8
Reed Solomon Decoding	FEC 204,188,t=8

Terrestrial Tuner

Input Connector	F-Female,IEC169-24,Loop-throught output
Frequency Range	43MHz to 1002MHz
Sensitivity	10 dBm~-84 dBm
Mode	8/16-VSB,ITU-T J.83 AnnexB 64/256QAM

Transport Stream A/V Decoding

Demultiplex	13818-1(System Layer)
Input stream	Max. 90Mbit/s
Aspect Ratio	4:3(default), 16:9 letterbox
Video Decoding	MPEG-4 Full HD Decoding
Video Resolution	480i/p or 576i/p, 720p, 1080i
Audio Decoding	ISO/IEC13818-3 Digital Audio Decoding
Video Output	CVBS,YPbPr
Audio Mode	Single Channel /Dual Channel, Stereo, Joint Stereo

Microprocessor & Memories

CPU Clock	398MHz
Flash Memory	4 Mbyte
SDRAM	128 Mbyte

Rear Features

HDMI	HDMI1.2
Video/Audio	CVBS,AUDIO R/L,YPbPr
Tuner	1 input & 1 Loopout

Ethernet+USB
Data Port
UHF Input
ATSC Tuner

RJ-45/USB2.0
RS 232 (D-SUB)
Option for UHF Remote Kit
1 Input and 1 loopout

Front Features

7 Key
Display
USB

PWR,CH Up/Down, Volume Up/Down,
Menu,Ok
4 Digit 7 Segment Display
1 Host USB2.0

Remote Control

Type
Battery

IR RCU
2x1.5V AAA Type

Power Supply

Input Voltage
Type

AC 90-250V, 50/60Hz
AC Plug

Physical Specification

Dimension (WxDxH)
Weight
Accessaries

260mm x 153mm x 45mm
1.2Kg
HDMI Cable

5. TROUBLESHOOTING

If the unit is not functioning properly, use this guide to identify and troubleshoot some common causes.

If your problem cannot be solved using this guide, please contact your vendor to resolve the issue.

Problem	Possible causes	Remedy
No Picture or Sound	<ol style="list-style-type: none">1. Wrong connection of the Component to TV input Terminal2. Wrong connection of HDMI cable to TV3. Wrong connection of antenna cable4. Wrong direction of antenna5. No signal or weak signal6. Wrong setting of channel information in MENU screen	<ol style="list-style-type: none">1. Connect two terminals correctly2. Connect two terminals correctly3. Connect the antenna cable correctly4. Adjust the direction of antenna5. Check the cable connections,6. Type the setting value correctly
Black-and-White Screen or V-Hold	<ol style="list-style-type: none">1. Your TV mode setting is different from the broadcasting mode	<ol style="list-style-type: none">1. Set TV to correct mode
The remote controller is not working	<ol style="list-style-type: none">1. Battery exhausted2. Fluorescent light interfering with the remote controller3. Remote controller is incorrectly aimed	<ol style="list-style-type: none">1. Change the batteries2. Try switching off the light3. Aim the remote control at the receiver
Distorted menu screen	<ol style="list-style-type: none">1. Improper brightness and contrast levels of TV set	<ol style="list-style-type: none">1. Adjust brightness and contrast to lower levels
Not working	<ol style="list-style-type: none">1. Process is down	<ol style="list-style-type: none">1. Unplug and plug the power cord



LIMITED WARRANTY

LinkTV Media warrants to the original purchaser that this product shall be free from defects in workmanship and material for two years from the date of original purchase. During this warrant period LinkTV Media will provide free of charge both parts and labor necessary to correct defects in workmanship or material.

This warranty does not cover damage due to lightning, fire, flood, or other acts of God, damage from accident abnormal conditions, improper use, or faulty installation, unauthorized software/hardware modification or damage by attempts to repair the units other than by the authorized service of LinkTV Media.

LinkTV Media's liability under this warranty is limited to servicing or adjusting equipment returned to LinkTV Media authorized service centers with freight prepaid.

LinkTV Media

 **Linkbox™ Media System**

PO Box 1368
11672 Tuxford St. Sun Valley, CA 91352, USA
TEL : 818-768-5494, FAX : 818-768-5040
E-mail : Linkboxusa@gmail.com
Web : www.Linkboxusa.com